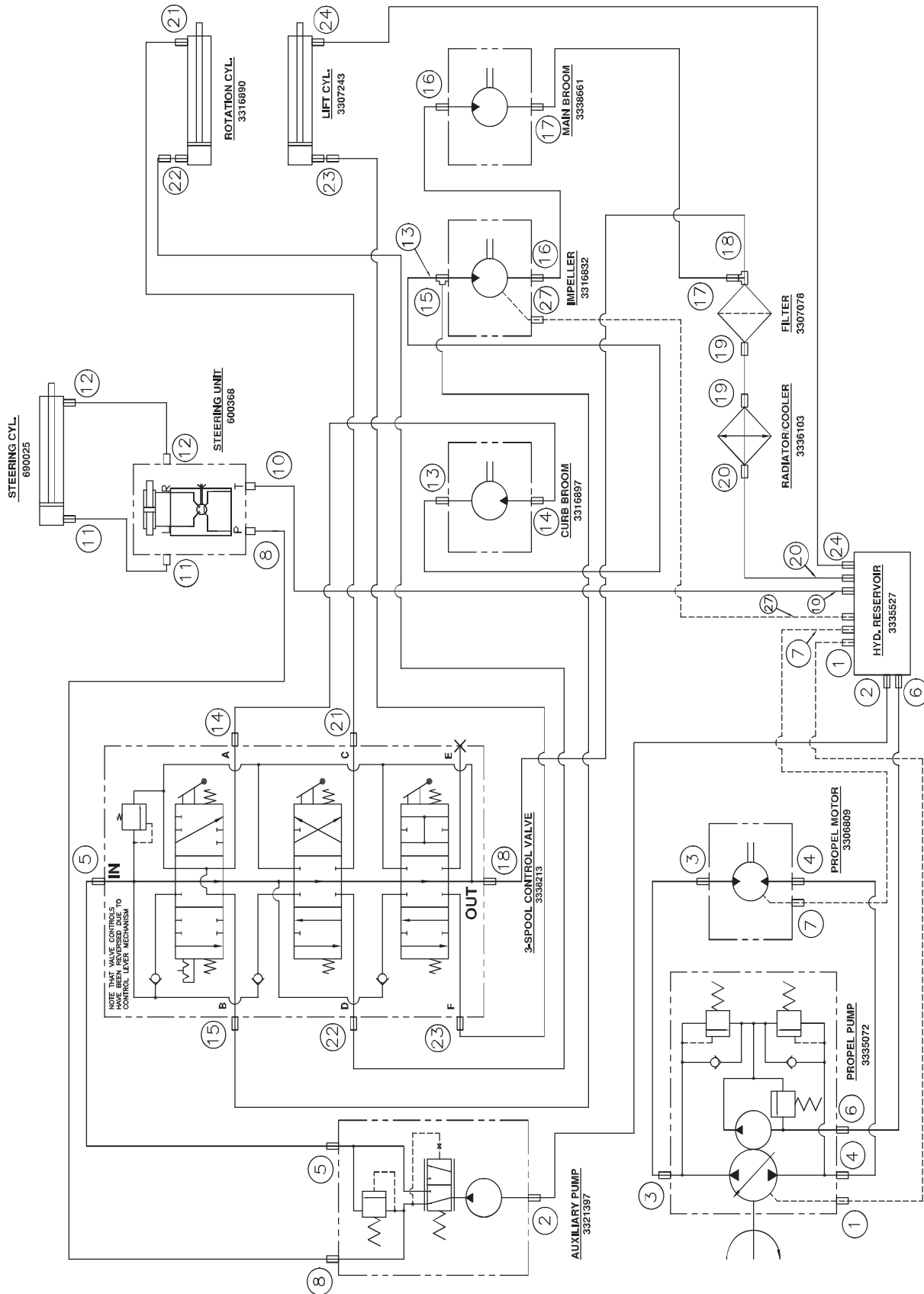


HYDRAULIC SCHEMATIC 9X



3334846, Sheet 1 of 2, Rev A, 12/12/2014

HYDRAULIC SCHEMATIC 9X

Adapter Assignment																		
No.	Adapter 1	hose assy #	Adapter 2	RESV	HYD PUMP	AUX PUMP	RW MTR	CONT VALVE	PS UNIT	ROT ACT	CB MTR	IMP MTR	MB MTR	FILTER	RAD	ROT CYL	LIFT CYL	Comments:
1	675524	675400	675527	1	2													Reservoir to Propel pump inlet.
2	675506	675401	675505	1		2												Reservoir to Aux pump inlet.
3	675500	675402	675501		1		2											Propel pump drivers side to Propel motor port A.
4	675501	675403	675502		2		1											Propel motor port B to Propel pump passenger side.
5	675528	675404	675524		2	1		2										Aux pump to 3-spool control valve port IN.
6	675520	675405	675521	2	1													Propel pump to reservoir.
7	675508	675406	675510	2			1											Propel motor to reservoir, case drain.
8	675512	675407	675511			1			2									Aux pump to Steering unit port P.
9																		
10	675552	675409	675519						1									Steering unit to reservoir.
11	675552	675410	675518						1	2								Steering unit L port to port P1 on steering cylinder.
12	675515	675411	675518						1	2								Steering unit R port to port P2 on steering cylinder.
13		675412	675528							1	2							Inlet tee to curb broom out.
14	675524	675413	675528					2		1								Valve port A to curb motor Inlet port A.
15	675524	675414	675525					1			2							Control valve outlet to Impeller inlet tee. See hose 13 for details.
16	675523	675415	675523							1	2							From Impeller out port to Main broom In port A.
17	675523	675416	675529 / 675526								1	2						From main broom outlet Port B to filter inlet.
18	675524	675417						1										From T port on control valve to filter inlet tee. See hose 17.
19	675537	675418	675530															From filter outlet to Cooler inlet (top of cooler pack).
20	675503	675419	675503													1	2	From cooler outlet (bottom of cooler) to reservoir.
21	675513	675420	675507					1										From control valve port C to rod end of rotate cylinder.
22	675507 / 675547	675421	675513					2									1	From piston end of rotate cylinder to control valve port D.
23	675518 / 675550	675422	675513					2										From piston end of lift cylinder to control valve port F.
24	675518	675423	675510														1	From rod end of lift cylinder to reservoir.
27	675508	675426	675510									1						From Impeller case drain to reservoir.

3334846, Sheet 2 of 2, Rev A, 12/12/2014